



Who we are.

THE BIM FACTORY is staffed with young, energetic and highly motivated individuals focused on the single goal of providing the best BIM solutions and designs for the industry in Asia, Middle East and the United States.

Whether it be for a small boutique shop or modeling for a large skyscraper, we work closely with every client to identify, create, and execute every single requirements.



Our approach.

BIM is a process that affects the entire life-cycle of a project as well as the parties involved from business strategies to management policies.

By looking at BIM holistically and from the end, it helps to align visions, increase efficiency, and optimize technology adoption to maximize benefits.

About us.

Founded in 2016, we are the first and only integrated building company located in Ho Chi Minh City, Vietnam. We specialize in providing modular fabricated buildings to the entire industry from dormitories to hotels to classrooms.



Our mission.

We are focused on achieving superior standards of BIM modeling production and creating the best BIM value for effective design and methodology for all of our clients. We work hard at providing the highest achievements for all of our clients by assessing project demands, goals, and specific project execution strategies.

Our vision.

We believe that everyone can benefit from better design and smarter developments. Our goal is to improve the design, engineering and construction process by expanding the implementation of BIM throughout Vietnam and South East Asia.

We envision that BIM can empower our clients to design better, build faster and cost less combined with creative technological solutions which can be beneficial for all of our clients.

Email us to find out more.

info@the-bim-factory.com



Check us out.
www.the-bim-factory.com

Our address.
3B Nguyen Ba Lan | Thao Dien Ward, District 2 | Ho Chi Minh City | Vietnam

Our other subsidiary:
www.the-fab-factory.com
www.the-concrete-factory.com
www.the-dream-factory.xyz
www.ivdc.org

**THE
BIM
FACTORY**

Our divisions.

We partners with the industry's leading companies throughout the world to give us more leverage in order to minimize the difficulties and challenges when adopting and executing a new process.

Our partners are leaders in their prospective regions and by teaming together, we give ourselves the advantage and more flexibility of providing the best possible solutions for our clients.

A few of our subsidiaries we have developed and are working with are:

THE FAB FACTORY | An integrated building company.

THE CONCRETE FACTORY | A fabrication company.

THE DREAM FACTORY | A hardware accelerator.

IVDC | TBF ACADEMY | BIM education & training.

FABLABS | A Fablabs network.

IVDC TBF academy.

Building the perfect BIM professional.

TBF Academy is the industry training division of Institute of Virtual Design and Construction (IVDC) Vietnam and THE BIM FACTORY who are led by an international team of industry professionals dedicated to training and teaching advanced BIM educational curriculum responding to industry demands for qualify BIM professionals.

As part of the BIM Education and Training program at THE BIM FACTORY, IVDC Vietnam is provide TBF and its partners with training and education curriculum for various types of BIM courses. See below for more information on the type of courses available.

BIM production.

We are modeling production specialists.

We love to build 3D BIM models and we have gotten so good at it, we are proud at the fact that we can build faster than anyone in Vietnam - if not the world. As of September 2016, we have modeled over 6,500,000 square meters of surface areas and completed over 65 modeling in BIM projects since 2014.

Some of our most popular BIM Production services are:

- + Architectural Modeling
- + Facade Modeling
- + Quantity Take-off
- + Clash Detection
- + Customized Components

BIM implementation.

Complete BIM adoption and training solutions.

Complete BIM adoption and training solutions. Our primary purpose is to create an exclusive BIM identity for every client that we work with because we know that every project is unique and have different requirements.

We have 2 types of BIM Implementation services:

- + Project-based
- + Company-based

All of which involves BIM process and modeling training support.

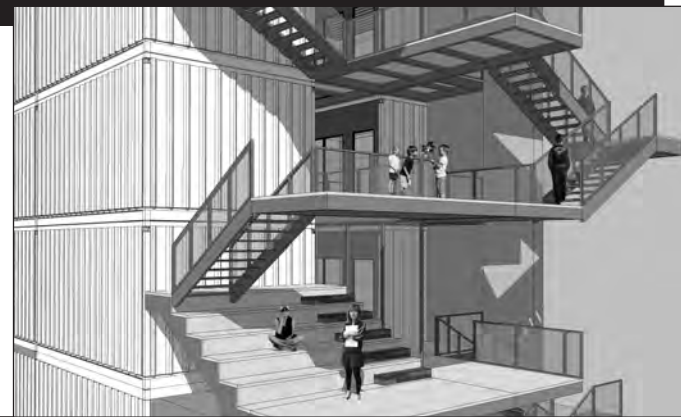
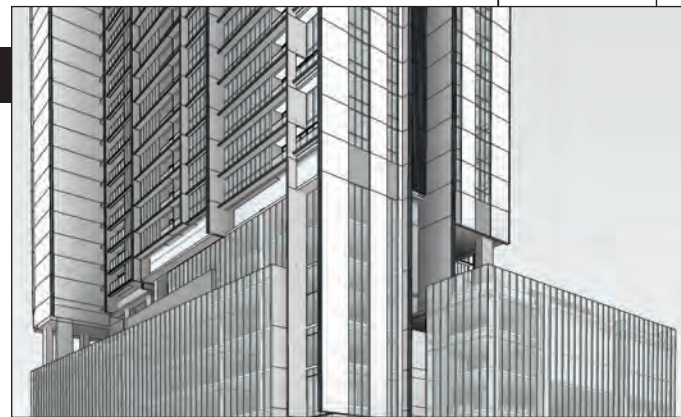
BIM technology.

Accelerating the technology of BIM and VDC.

We are constantly looking for ways to transform the built environment with advanced technological tools and applications.

A few of our focuses are:

- + Autodesk Solutions.
- + ArchiCAD training and support.
- + 3D Laser Scanning.
- + Simple BIM Collaboration Tool.
- + Modular Fabrication Technology (MOD-FAB-TEC).
- + Building Information Manufacturing.
- + Automated Building Assembly Technology.



Our typical 2-step BIM production process.

For creating BIM models, typically, there are 2 steps for successful completion:

STEP 1. QUOTATION.

Send us your DWG/PDF/CAD files.

We will review the drawings and send back our quote within 24-48 hours.

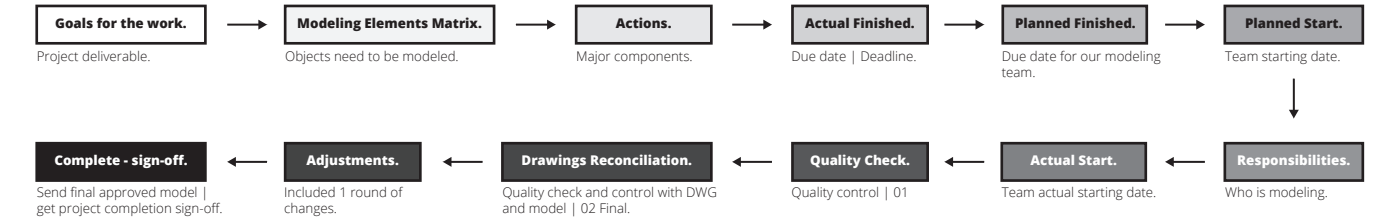
Our quotation typically will have 3 primary elements:

1. **Number of man-days** needed to complete conversion of the models from DWG to BIM.
2. **Duration** of working days we will need to complete the scope.
3. **Cost per man-day** and **total cost** of the scope.

STEP 2. ACTION PLAN.

Create an Action Plan.

An Action Plan is a simple process for a modeling in BIM project. It usually start with a goal and a quick overview of the entire process for the project in order to understand exactly the objectives of our scope.



91

Number of BIM projects completed as of June 2017.

Our other services includes.



Our AUTODESK solutions just got more complete.

THE BIM FACTORY is now an official Authorized Training Center (ATC) and an Authorized Certification Center (ACC) for Autodesk.

Our team of experts is capable of delivering high-quality Autodesk applications training that are approved by Autodesk.

Participants who have completed our certified training courses will receive a Certificate of Completion directly from Autodesk that is recognized globally for training excellence.

Our training courses includes:

- + AutoCAD
- + AutoCAD Civil 3D
- + Revit Architecture
- + Revit Structure
- + Revit MEP
- + Navisworks

ARCHICAD Training

We provide 3 levels of ARCHICAD training for professionals:

- ARCHICAD Essentials.
- ARCHICAD Intermediate.
- ARCHICAD Productivity | WORKSHOP



9

Number of countries with projects we worked on.

We have 4 tiers of skill levels in our company:

- BIM Modeler I & II (Discipline-specific)
- BIM Coordinator I & II (Discipline-specific)
- BIM Manager I & II (Discipline-specific)
- Senior BIM Manager (Discipline-specific)

We train and train and train.

In terms of BIM production, everyone starts at the BIM Engineer level either at Modeler I or II based on experience and skills. We then provide training and support to the new engineer for the two months to get him/her acclimated to the working process. After 2 years of modeling work, he/she can move up to the Coordinator level with proper training and guidance.

We set the BIM standards for modeling.

We have worked on projects in Singapore, US, Malaysia, Australia, China, Dubai, South Korea, and Vietnam.

We work with industry experts all over the world including the leading companies in the United States as well as the Ministry of Construction in Vietnam along with the top design, engineering and construction companies throughout ASEAN.

15

Number of Autodesk Certified Professionals.